

RAILWAY HOUSE
2 REMPSTONE ROAD
SWANAGE
DORSET
BH19 1DW
Opposite the Steam Railway Station



Tel: 01929 423333
(24 hours)
Web: www.milesandson.co.uk
Email: property@milesandson.co.uk



High Street, Swanage, Dorset BH19 2NS

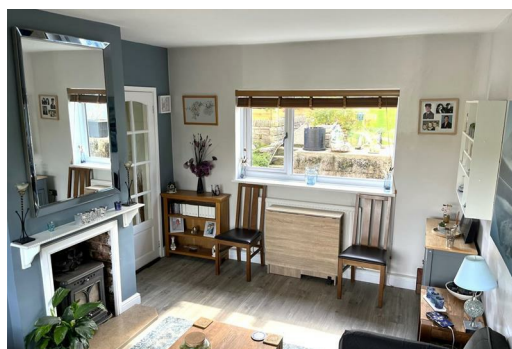
Link-semi-detached family house to the west of Swanage convenient for local schools and open county. 3/4 bedrooms, 1/2 reception rooms, kitchen, utility room, w.c., shower room/W.C., gas central heating, double glazing, south facing rear garden, front garden, driveway, hill/country views. Residency covenant in place (please read full details).

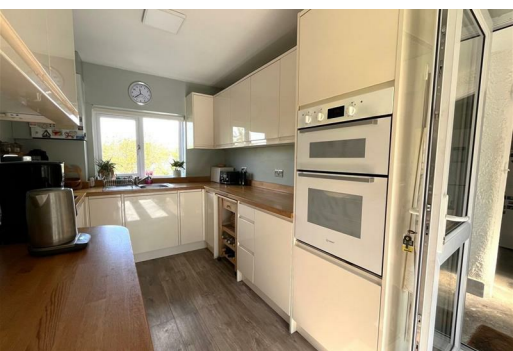
- Ex-Local Authority terraced house
- Kitchen. Utility room
- Double glazing
- Hill/country views
- 3/4 bedrooms
- Ground floor W.C. Shower room/W.C.
- South facing rear garden
- 1/2 reception rooms
- Gas central heating
- Front garden and driveway parking

Asking Price £365,000

High Street, Swanage, Dorset BH19 2NS

* Awaiting full particulars *







Energy Efficiency Rating		
	Current	Potential
<i>Very energy efficient - lower running costs</i>		
(92 plus) A		
(81-91) B		
(69-80) C		
(55-68) D		
(39-54) E		
(21-38) F		
(1-20) G		
<i>Not energy efficient - higher running costs</i>		
England & Wales	EU Directive 2002/91/EC	